



## Riding-type tea plantation management machine

Work efficiency is improved with excellent durability and easy handling

Advanced technology  
& High performance  
& Easy operability



■ Specification  
Riding-type tea plantation management machine (KJM8)

Engine Kubota 4-cylinder diesel  
Displacement 1498cc  
Size  
(Overall length) During stowed: 3275mm  
During operation: 2730mm  
(Overall width) 2150mm  
(Overall height) 2645mm

Track gage (Fixing)  
1700mm • 1750mm • 1800mm • 1850mm

Hill-climbing ability safety angle  
(without load) Within 15°C

### FEATURES

- Multiple tea field management is available as long as there is KJM8
- Work efficiency is improved with excellent durability and easy handling
- Each optional part comes with hydraulically powered system
- KJM8 which attaches optional parts enable pruning tea plants, spreading compost, spreading fertilizer, tilling soil deeply, and breaking up soil

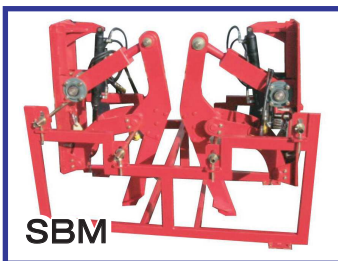
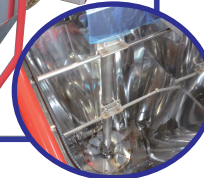
### Optional



<Compost spreading unit>  
Method: Double-screw discharging  
Speed adjustment method  
Capacity: 1m<sup>3</sup>  
Bucket ground height: 1200mm  
Driving speed: 0 to 3.75km/h



<Fertilizer spreading unit>  
Method: Stirring blade spreading \* Free adjustment for spreading volume  
Hopper capacity: 120 liters x 2  
\* Extra 10 bags can be loaded.  
Hopper ground height: 910mm  
Driving speed: 0 to 3.75km/h



SBM

● Subsoiler



JSKM

● Hoe deep plowing unit



MJSM

● Rear pruning unit



JRC

● ROTARY CULTIVATOR

\* Note that specifications and appearance are subject to change without notice in order to improve the machine.



**KAWASAKI KIKO CO., LTD.**

810-1, Dategata, Kakegawa City,  
Shizuoka Prefecture 436-0005 JAPAN  
Phone: +81-537-27-1712 Fax: +81-537-27-1716  
Website URL <http://www.kawasaki-kiko.co.jp>