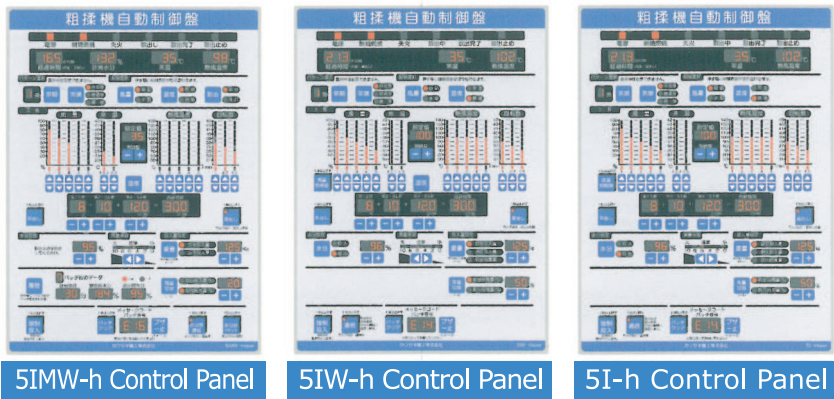


Kawasaki Control Panel

Kawasaki's microcomputer control panel to differentiate for operability and quality

Control panel A: Keep air volume, temperature and rotation constant.
5I-h control panel: Control with 5 levels for air volume and temperature, 2 levels for tea temperature, and 3 levels for rotation.
5IW-h control panel: In addition to control functions of 5I-h control panel, microcomputer control to change air volume and temperature according to weather conditions detected by a humidity sensor, dry off to specified value in the specified period, and perform dampness rolling.

5IMW-h control panel:
In addition to control functions of 5IW-h control panel, create quality by changing heat quantity according to moisture measurement results every minute, and remove at the specified moisture percentage. Moreover, the removal moisture records for last 10 batches can be checked.



* Primary tea rolling dryer/wide primary tea rolling dryer specifications

Standard	Specifications		Machine (frame) dimensions (m)			Volume below drum shaft (m3)	Feeding volume (kg)	Revolutions per minute (rpm)	Required power (kW)
			Width	Depth	Height				
35K	35K		1.98	1.23	1.72	0.44	30~40	31~42	0.75
60K	60K-A (Full automatic type)	Wide	3.18	1.35	2.10	1.09	45~60	31~42	1.5
	60K-5I-h (Microcomputer 5-level control type)	Standard	2.46	1.51	2.20	0.78	45~60	31~42	1.5
	60K-5IW-h (Microcomputer 5-level control type)								
	60K-5IMW-h (Microcomputer type with moisture meter)								
90K	90K-A (Full automatic type)	Wide	3.63	1.45	2.53	1.55	70~90	31~42	2.2
	90K-5I-h (Microcomputer 5-level control type)	Standard	2.90	1.46	2.63	1.17	70~90	31~42	2.2
	90K-5IW-h (Microcomputer 5-level control type)								
	90K-5IMW-h (Microcomputer type with moisture meter)								
120K	120K-A (Full automatic type)	Wide	3.40	1.76	2.76	1.68	95~120	31~42	3.7
	120K-5I-h (Microcomputer 5-level control type)	Standard	3.10	1.76	2.82	1.50	95~120	31~42	3.7
	120K-5IW-h (Microcomputer 5-level control type)								
	120K-5IMW-h (Microcomputer type with moisture meter)								
180K	180K-A (Full automatic type)	Wide	4.69	1.76	2.76	2.49	140~180	31~42	5.5
	180K-5I-h (Microcomputer 5-level control type)	Standard	4.24	1.76	2.82	2.29	140~180	31~42	5.5
	180K-5IW-h (Microcomputer 5-level control type)								
	180K-5IMW-h (Microcomputer type with moisture meter)								
200K	200K-A (Full automatic type)	Wide	4.91	1.91	2.79	2.89	150~200	31~42	7.5
	200K-5I-h (Microcomputer 5-level control type)	Standard	4.65	1.76	2.89	2.49	150~200	31~42	5.5
	200K-5IW-h (Microcomputer 5-level control type)								
	200K-5IMW-h (Microcomputer type with moisture meter)								
240K	240K-A (Full automatic type)	Wide	5.91	1.91	2.80	3.56	190~240	31~42	7.5
	240K-5I-h (Microcomputer 5-level control type)	Standard	5.66	1.76	2.86	3.02	190~240	31~42	7.5
	240K-5IW-h (Microcomputer 5-level control type)								
	240K-5IMW-h (Microcomputer type with moisture meter)								

* 0.2kw is added when automatic pool is attached.
* Communications function is added to 5IMW-h for FA specifications.
* Note that specifications and appearance are subject to change without notice in order to improve the machine.



Kawasaki Kiko Co., Ltd.

Dealer

Sales Headquarters:
810-1, Suberikawa, Dategata,
Kakegawa City, Shizuoka Prefecture
436-0005 JAPAN
Phone: +81-537-27-1791
Facsimile: +81-537-27-1716
Website <http://www.kawasaki-kiko.co.jp>

"Into the Future with Green Tea"
Kawasaki Kiko Co., Ltd.

Primary Tea Rolling Dryer Wide Type

60K 90K 120K 200K 240K

Middle size between tea scatter dryer and primary tea rolling dryer, and color when light twisting is improved
Suitable for pre-twisting process or as a primary tea rolling dryer for thin leaves through improved transpiration by thinning tea layer and gentle low-pressure pressing arm rolls. This dryer is known for providing great tea leaf color.

Primary Tea Rolling Dryer

35K 60K 90K 120K 200K 240K

Offers both twisting and stirring, pure color and no astringent taste
Twists and removes astringent taste, improves colors by twisting, stirring and blowing fresh hot air efficiently. Kneads using a pressing arm with an optimal spring pressure according to the raw material tea leaves to dry out inner water, quickly evaporates by stirring, and controls tea temperature and dampness to manufacture great tea.

3 in 1 Hyper

120K 200K 240K

Features

- Optimal rolling for all types of leaves from younger new shoots to over matured leaves without changing the rolling drum radius.
- Rolling with efficient tea temperature control using low air volume to manufacture great flavor tea.
- Dry out inner water by blowing hot air with special attention to rolling, finishing for pure color.
- Large removal door, no tea leaves are left behind in the drum when removing the drum contents.
- Front and rear doors are equipped as standard, easy cleaning.
- Transparent window is installed on new leaf scattering dryer for checking the rolling situation in the drum.



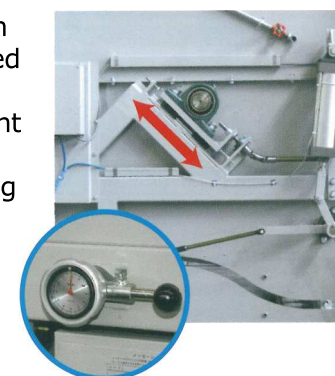
Clear View of Inside

Transparent window is installed on the new leaf scattering dryer to check the tea leaf movement.



Easy Adjustment from Young to Matured Leaves

The position of main shaft can be changed by operating the handle from the front of machine for leaf rolling and scattering adjustment.



Ideal Drum Volume

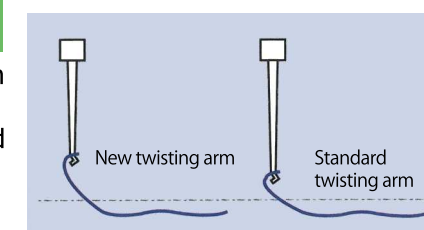
Change the drum volume based on the water content ratio to realize both finishing color and twisting.

	Tea Scattering Dryer	Wide Type Primary Rolling Dryer	Primary Tea Rolling Dryer
Capacity ratio	1.4	1.2	1

Hold More, Twist More

Twisting arm (Optional)

Newly-designed twisting arm can hold more tea leaves, and twist even over-matured or large tea leaves to shape into sharp tea leaves.



Easy Cleaning

Rear door is installed as standard for easy cleaning. Open upward for easy operation. (Installed on 120K or higher models)



Easy Pressing Arm Adjustment

Removes incrustations and adjusts pressing arm from the surface floor because of front opening, wide opening drum. (Except 35K)



Moisture Meter for Primary Tea Rolling Dryer

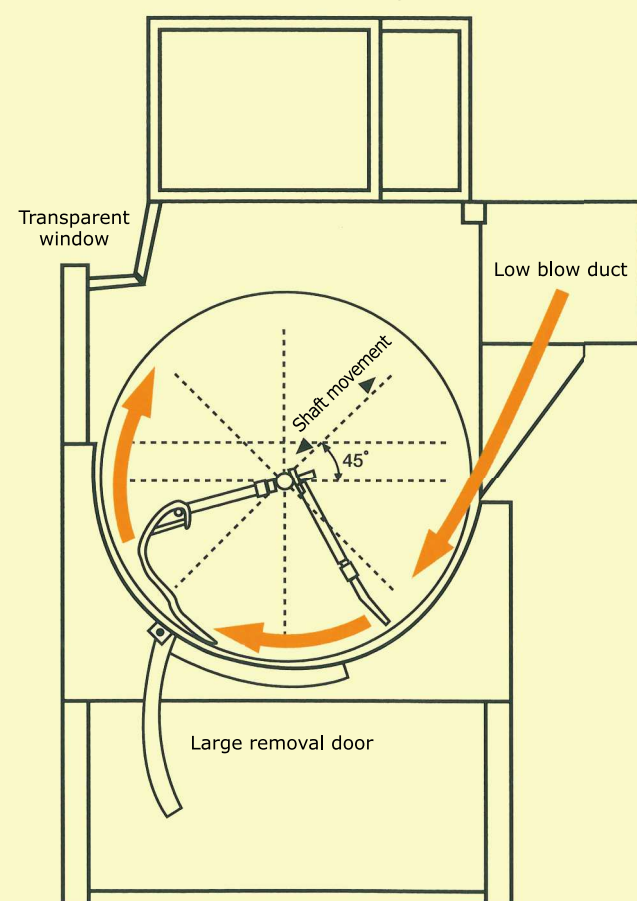
Control moisture precisely, manufacture high quality tea.

Removal Judgment Type

Removal judgment type microwave moisture meter to precisely measure the internal moisture every 40 seconds by sampling, and automatically remove when the measurement value reaches the specified water content ratio. Removable, compact, and easy-to-operate with a switch to switch between time removal and moisture removal.



Cross Section Diagram



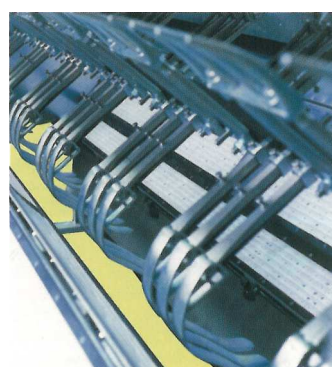
Low Blow Duct for Rolling

Lower the angle of the duct aiming at the bottom of drum, tea temperature can be kept with small volume of air. Moist rolling with small volume of air.



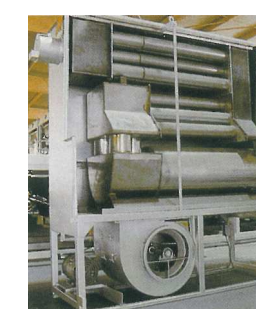
No leaf Left Behind

Large removal door, no tea leaves are left behind in the drum when removing the drum contents.



Energy-saving Furnace

Energy-saving furnace by increasing the number of furnace tubes to enlarge the heat exchange surface. Anti-dust air foil type fan requires no cleaning.



Air Volume Adjustment based on Air Humidity

Humidity sensor which does not require water feed measures the humidity of the air to be drawn into the furnace and provides feedback. Air volume is increased or decreased according to the measurement values.

