

Tea roller specifications

\* Tea roller specifications
○: Standard △: Optional

Standard	Removal and Weight Movement Control				Table Shape	Sweeper	Circular cone up/down adjuster for heavy pressure
	Manual Removal	Automatic Removal					
	Manual Weight Movement	Control Panel A		Microcomputer Control Panel			
		Manual Weight Movement	Automatic Weight Movement	3-level weight pressuring With tea ball breaking process			
		With rotation pause switch					
35K	○	○	△	△	With flat step	Installed	△
60K	○		△				△
90K			△				△
120K			△	△			△
200K		○	△	△			○
240K		○	△	△			○

\* Communications function is added to the microcomputer control panel for FA specifications.

\* Tea roller specifications

Standard	Machine dimensions (m)			Bowl volume (m³)	Revolutions per minute (rpm)	Feeding volume (weight) (kg)	Required power (kW) <small>Values in parentheses are for automatic weight movement.</small>
	Width	Depth	Height				
35K	1.82	1.52	1.50	0.06	28	30~35	0.75
60K	2.10	1.79	1.65	0.09	25	55~60	1.5(0.1)
90K	2.21	1.90	1.80	0.13	23	75~90	1.5(0.1)
120K	2.36	2.05	2.04	0.17	22	90~120	2.2(0.2)
200K	2.80	2.38	2.64	0.26	22	150~180	3.7(0.2)
240K	3.01	2.57	2.56	0.33	22	180~240	5.5(0.2)

\* Note that specifications and appearance are subject to change without notice in order to improve the machine.

Kawasaki Kiko Co., Ltd.

Dealer

Sales Headquarters:
810-1, Suberikawa, Dategata,
Kakegawa City, Shizuoka Prefecture
436-0005 JAPAN
Phone: +81-537-27-1791
Facsimile: +81-537-27-1716
Website http://www.kawasaki-kiko.co.jp



"Into the Future with Green Tea"
Kawasaki Kiko Co., Ltd.



# [ Rolling ]

*Consistent moisture*  
*Consistent color*  
*Softening*

*Dry out inner water by kneading and prevent amber discoloration in post-process.*  
*Even coloring to improve quality.*  
*Softening veins for easy shaping.*



60K-A



120K

## Excellent Hygiene and Endurance

Stainless table, mold-free after washing. No abrasion or deformation with long-term use.

## Twisting

Rolling and rolling pressure are improved while leaves are twisted without sticking to the table as the twisting surface on the table is flat and the number of table hills is reduced to half. Perfect for younger new shoots, rain tea, heavy steaming tea, and light primary drying.

## No Tea Leaves Left Behind

Tea leaves flowing out of the rolling bowl during tea manufacturing do not stay on the table as the table has steps, and leaves are always swept for consistent moisture.



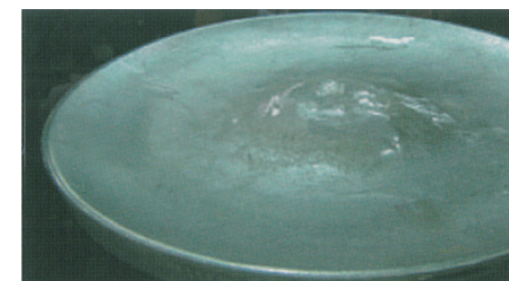
## Small Volume Rolling

Since the circular cone for heavy pressure can be adjusted upward and downward, lower the circular cone with the adjuster for small volume rolling such as younger new shoots and heavy steamed leaves to apply sufficient rolling pressure.



## Circular Cone Heavy Pressure Plate Flat Type (Optional)

Flatter design than conventional type, improving rolling and rolling pressure.



## Easy Manual Open/Close

The air inside the cylinder automatically escapes when the air supply cock to the cylinder is shut, and the removal door opens by pushing down the handle manually.



## Precise Control

Various control panels such as a control panel with 3-level pressuring tea ball breaking process and an energy-saving type control panel to pause only rolling or move weights back and forth with a switch can be selected according to the manufacturing methods.

Microcomputer Control Panel (For FA)



Control up to 4 tea rollers. In addition to 3-level pressuring and tea ball breaking process, standard programs based on leaf quality and a function to copy to other machines are installed on this microcomputer type control panel. Interactive communications function is added for FA.

Control Panel A



Equipped with automatic control panel to specify the twisting time using a timer, and a switch to pause the rolling.

Weight Movement Control Panel



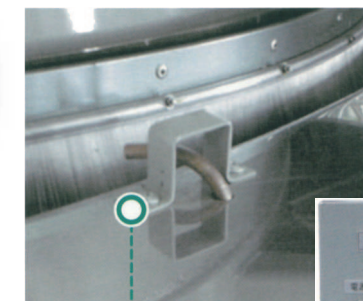
Move weight back and forth by bending the snap switch back and forth.

## Rotation Inverter (Optional)

Can be changed to any rotation speed, even low speed.

## Sprinkler (Optional)

A sprinkler convenient for cleaning, etc. is installed. Sprinkling time can be specified with a timer.



Sprinkler Control Panel

